

V-BUSTER

Article No.: 1718.223

Instruction Manual

- Thank you for purchasing this product.
- Please read and keep this instruction manual carefully.
- Please use and maintain this product properly.

Product Components

Contents

Before Using V-Buster

Product Components - - - - - 2
 Understanding Main Appliance - - - - - 3

Getting Started

Installing V-Buster - - - - - 4-5

Using V-Buster

Remote Control Functions - - - - - 6
 Descriptions of Indicator Lights - - - - - 7
 Operation Functions - - - - - 8

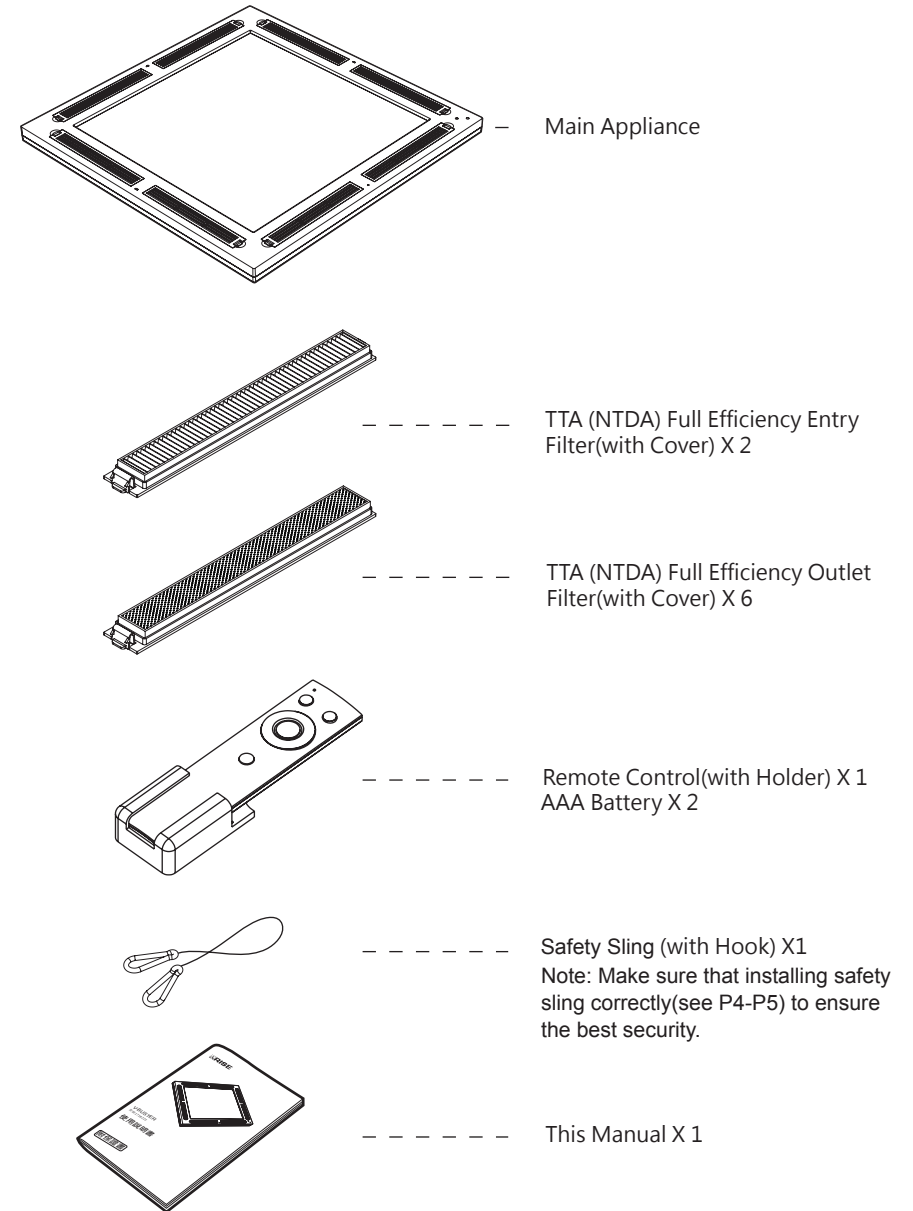
- Changing the fan speed
- Stepless Dimming
- Air Circulation Mode
- Memory Mode

Replacing & Installing Filters - - 9

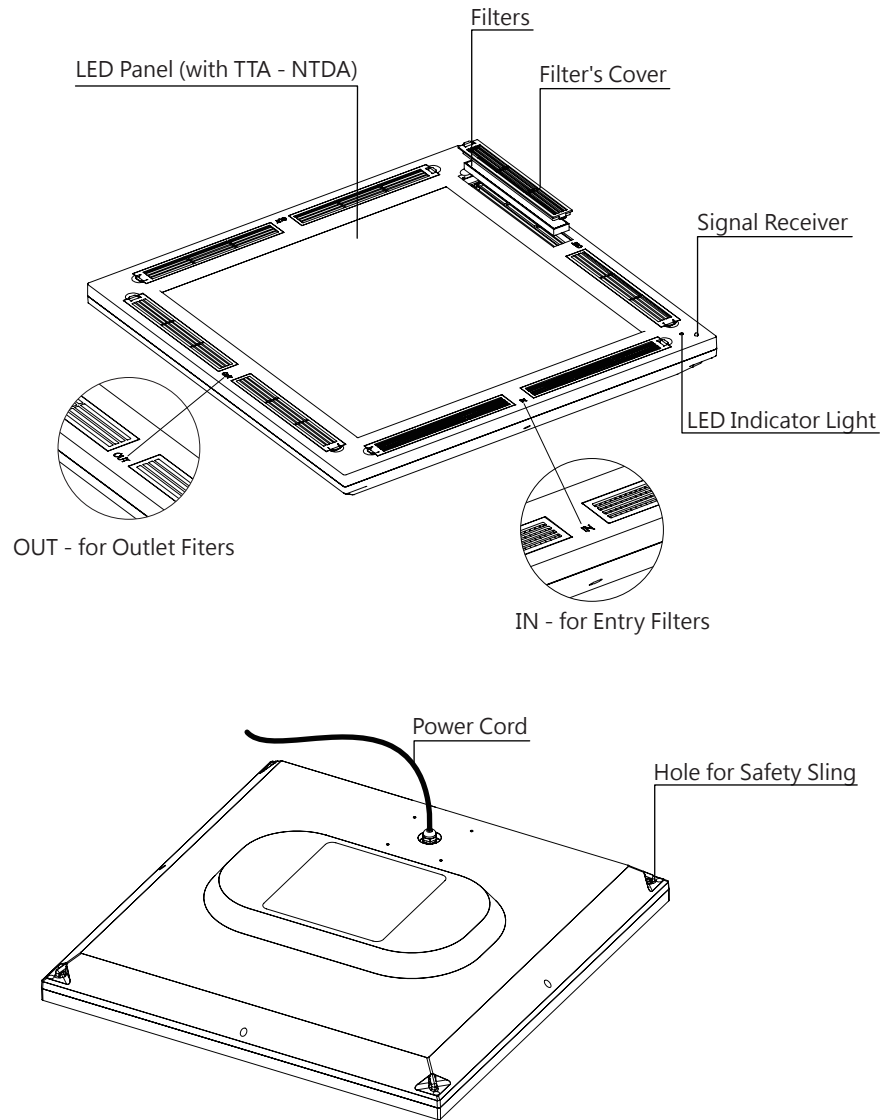
Safety Precautions - - - - 10

Common Problems & Troubleshooting - - - - 11

Product Specification - - - - 12



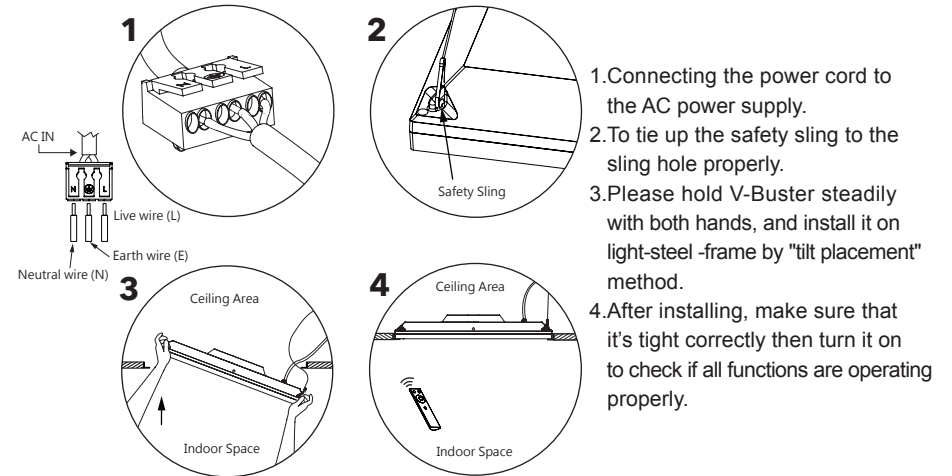
Understanding Main Appliance



Installation Modes

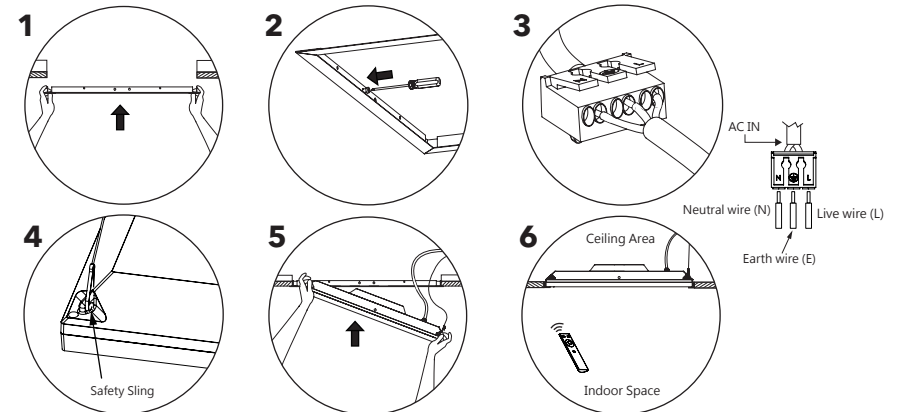
Note:
Power cord can only be installed when power is off.

A Recessed mode (Light-steel-frame)



1. Connecting the power cord to the AC power supply.
2. To tie up the safety sling to the sling hole properly.
3. Please hold V-Buster steadily with both hands, and install it on light-steel-frame by "tilt placement" method.
4. After installing, make sure that it's tight correctly then turn it on to check if all functions are operating properly.

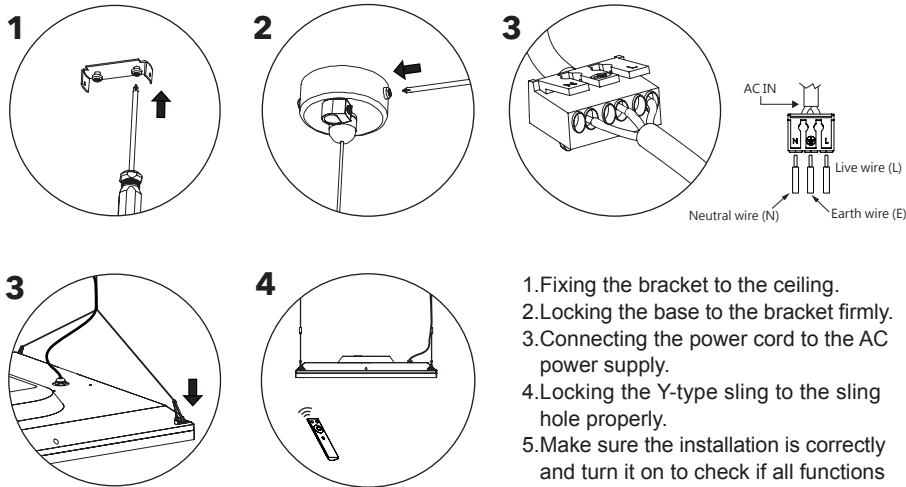
B Recessed (visible profile ceiling) mode (Frame is available on request.)



1. Fixing the frame firmly to the ceiling hole.
2. Locking the frame firmly in the proper position with screws.
3. Connecting the power cord to the AC power supply.
4. To tie up the safety sling to the sling hole properly.
5. Please hold V-Buster steadily with both hands, and install it on the frame by "tilt placement" method.
6. After installing, make sure that it's tight correctly then turn it on to check if all functions are operating properly.

C Pendant mode

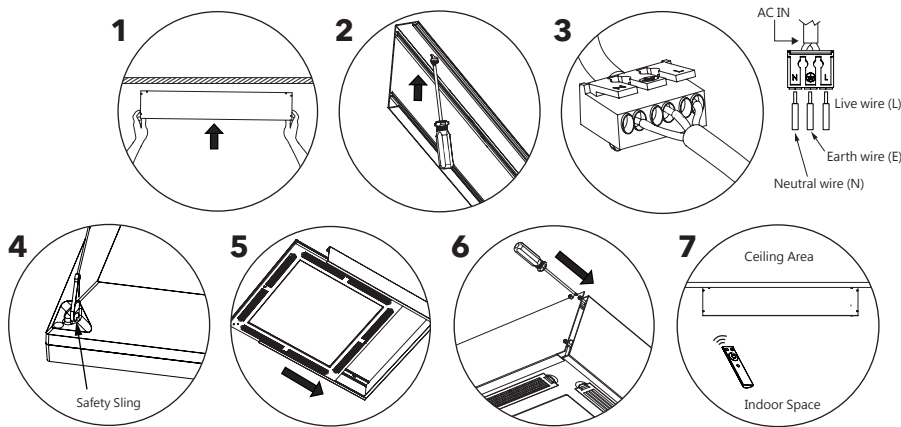
(Y-type Sling is available on request)



1. Fixing the bracket to the ceiling.
2. Locking the base to the bracket firmly.
3. Connecting the power cord to the AC power supply.
4. Locking the Y-type sling to the sling hole properly.
5. Make sure the installation is correctly and turn it on to check if all functions are operating properly.

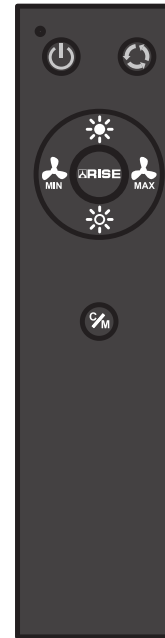
D Surface Mounted (ceiling) mode

(Ceiling box is available on request)



1. Placing the ceiling box to the proper position of the ceiling.
2. Firstly, lock the three sides of the ceiling box firmly with screws.
3. Connecting the power cord to the AC power supply.
4. Locking the safety sling to the sling hole properly.
5. Holding V-Buster steadily with both hands, and to install it by parallel sliding method.
6. Locking the fourth side of the ceiling box firmly with screws.
7. Make sure the installation is correctly and turn it on to check if all functions are operating properly.

Remote Control Functions



【Switch On/Off】 button



【Circulation】 button

Press the button once to turn off the light, but keep the functions of circulation and purification. Simply press the button again to turn on the light.



【Dimming (Brightness)】 button

Press and hold the button to choose the brightness you prefer.



【Dimming (Dimness)】 button

Press and hold the button to choose the dimness you prefer.



【Fan Speed (Up)】 button

Press and hold the button to increase and to choose the fan speed from 0%, 30%, 60% to 100%.




【Fan Speed (Down)】 button

Press and hold the button to decrease and to choose the fan speed from 100%, 60%, 30% to 0%.






【Maintenance Mode】 button

Must be cooperated with  to activate the function.

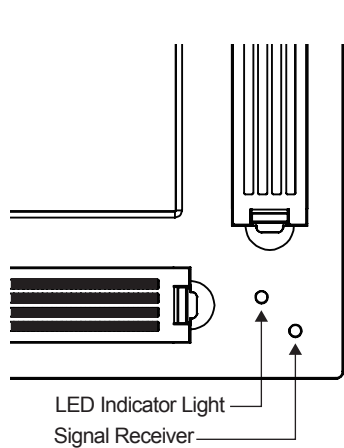


【Set Up】 (Protection Lock) button

Change to Maintenance Mode :

1. Press  once, then press and hold  for 3 seconds, the indicator light turns blue and keeps flicking.
2. Make sure that fans and internal UV light are all stopped, then can change the new filters.
3. After replacing new filters, Press  again, the flashing of the indicator light will be stopped, the functions of the fan and internal UV light will be resumed.

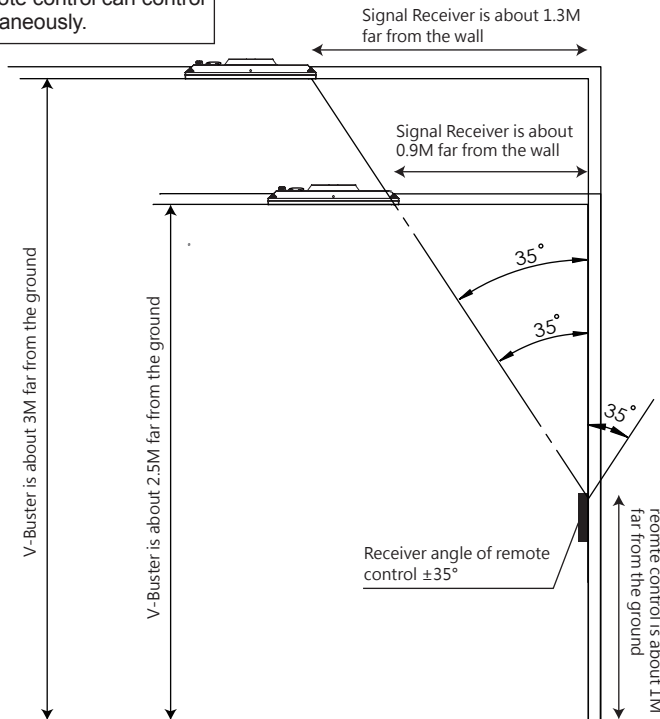
Descriptions of Indicator Lights



- A** **【Switch On】**
The light stays in blue colour.
- B** **【Switch Off】**
The light stays in red colour(Standby).
- C** **Maintenance Mode**
The light displays blue colour and keeps flicking. It's equipped with the protection lock to prevent from accidentally pressing the button (see "Remote Control Functions").
- D** **Replacing new filters**
Please replace new filters when the interlacing blue and red light keeps flicking. After the replacement, press 【Set Up】 button that to activate the function and to restart counting time of changing filters(about 180 days).

Signal Range of Remote Control

Within the range, a remote control can control multiple V-Buster simultaneously.



Operation Functions

A 4 Types of the Fan Speed

Super Mode (100%)

Fastest and strongest power of purification

High mode (60%)

The sound of fan is reduced by half, but still reach a high efficiency of purification.

Soft mode (30%)

Enjoy fresh indoor air under a slight sound of fan.

Quiet mode (0%)

The fan is stopped, and converted to passive purification.

B Stepless Dimming:

Brightness can be continuously enhanced or reduced.

V-Buster uses energy-saving LED light, flashing-free, $UGR \leq 19$, makes the eyes comfortable.

C Air Circulation Mode:

When the light is turned off, the fan still keeps to circulation and to purify the indoor air.

D Memory Mode:

Once set, next time when you switch V-Buster on, the previous setting is resumed automatically. No need to reset each time.

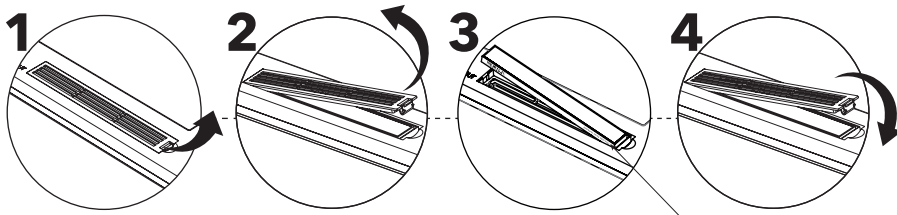
Replacing/Installing Filters

Replace the filters every 6 months for optimal functioning of the purifier.
* Additional filters are available for order.

VBF-03 (6 months set)/ VBF-04 (1 year set) (without Cover)

TTA (NTDA) Full Efficiency Entry Filter x 2/ x 4
TTA (NTDA) Full Efficiency Outlet Filter x 6/ x 12

A Unplugged



1. According to the direction of the arrow that indicates in the picture, pull the filter's cover from the appliance.
2. Remove the filter.
- 3 Place the new filters into the cover.
- 4.Put the cover back into the appliance.

*Important Note:

1. When the power is on, must change to "Maintenance Mode" (see p.30 & p.31) before replacing the filters. Maintenance mode aims to turn off the internal UVA light that to grantee a safest condition.
2. Before replacing new filters, make sure that they are all in a good condition and each core is tightly and correctly placed inside the cover.
3. After replacing new filters, please reset the mode that to activate the function and to restart counting time of changing filters(about 180 days).

B Plugged

Change to "Maintenance Mode" before replacing new filters, then repeat 【A】 1, 2, 3, 4.

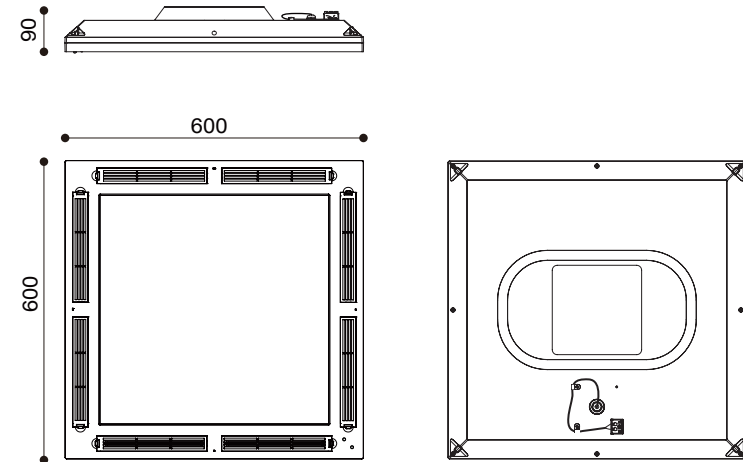
Safety Precautions

- ⚠ Do not use the appliance if the plug, the power cord, or the appliance itself is damaged.
- ⚠ Do not let water or any other liquid or flammable detergent enter the appliance to avoid electric shock and/or a fire hazard.
- ⚠ Do not clean the appliance with volatile oil, or water, or liquids, or a (flammable) detergent to avoid electric shock and/or a fire hazard; wipe the appliance only with a soft dry cloth or dusting papers.
- ⚠ Avoid knocking against the appliance with hard objects.
- ⚠ Do not decompose or repair or rebuild it without authorization.
- ⚠ Do not put fingers or metal objects into the gap of the appliance.
- ⚠ Do not attach anything on top of the appliance.
- ⚠ When the sound becomes strangely loud or the plug becomes hot, please stop using the product immediately and unplug the power plug under safe conditions.
- ⚠ Always unplug the appliance after use and before cleaning, or maintaining, or checking or moving or replacing the filters.
- ⚠ Do not use this appliance when you have used indoor smoke-type insect repellents or in places with oily residues, burning incense, or chemical fumes.
- ⚠ Do not use the appliance near gas appliances, heating devices or fireplaces.
- ⚠ Do not use the appliance in a room with major temperature changes, as this may cause condensation inside the appliance.
- ⚠ Please maintain the indoor temperature between 0° - 35°C, and the humidity between 20%-80%, in order to prevent damage to the appliance.

Common Problems & Troubleshooting

Problems	Troubleshooting
About Electric Power	<ul style="list-style-type: none"> →Please ensure that the power cord interface is connected to the power cord. Or make sure the plug is connected to the socket. →If the indicator light is off, please press "on/off" button again. →Please check that if a power outage has caused. Or make sure that the current breaker has turned on.
About Airflow	<ul style="list-style-type: none"> →There are 4 levels of fan speed available; when the fan speed changes automatically or goes to the wrong mode, please reset the mode you prefer or restart the appliance. →When the airflow is significantly weaker than before or even stopped, make sure that all filters are clean and properly installed.
About Filters	<ul style="list-style-type: none"> →Always switch off the appliance before replacing the filters. →Please replace the filters every 6 months, or when the indicator light is on. →The filters are not washable nor vacuum cleanable. →If the filter is stained with oil, please replace it immediately; do not wash or wipe it. →Do not tear or smell the filters as they have collected pollutants from the air. →When the indicator light keeps on even after I have replaced the filters, please follow the 「Understanding Remote control」 to reset it.
About Cleaning	<ul style="list-style-type: none"> →Always unplug the appliance before cleaning. →Never immerse the appliance in water or any other liquid. →Never use abrasive, aggressive, or flammable cleaning agents such as bleach or alcohol to clean any part of the appliance. →When need to clean dust from the body of the appliance, please wipe lightly with a soft dry cloth or dusting papers

Specification



V-Buster	
Article No.	1718.223
Weight	7.5kg
Total Wattage	55W
LED Panel Wattage(Max)	36W
Fan Wattage(Max)	19W
Voltage	90-264 (VAC)
Lumen	2800 (lm)
Beam-angle	110°
CCT	5000K
CRI	80+
DRIVER	I/P : 90-264V 50/60HZ O/P : 30-40V 900mA Stepless Dimmable: Infrared Control